



SABYASACHI

for

nilaya

furnishing by  asianpaints

CHOWK



Sabyasachi x Nilaya

What I design is the result of myriad inspirations – whether it's fashion or homes. And creating designs for Heartland was like stepping into a familiar world, textured by a variety of experiences, acquisitions, memories and stories that have stayed with me, knowingly and unknowingly: the skillfully painted fabrics that were born along the Coromandel Coast; embroideries from an ancient world; well-remembered motifs and patterns that continue to enchant; old-world Calcutta with its fading luxury; the traditions of miniaturists from colonial-era Murshidabad.

The Thar, Makhmal and Soofah collections that comprise Heartland celebrate the beauty of classical motifs reinterpreted and hand painted by artists from the Sabyasachi Art Foundation. They find expression through a reimagining of traditional patterns and a distinctive palette of colours I have evolved over time. These carefully crafted fabrics can transform spaces and perhaps your perspective as well. The patterns, designs and motifs that make up the fabric collections of Heartland is an endeavour to make this journey of transformation uncommon and unforgettable – as it should be.

After all, at the heart of every home is the story of the people who inhabit it, make it and shape it just the way they like it. Layer it with well-loved elements and their distinct styles. Heartland, I hope, serves as a reminder of the beauty that still remains, and endures, in an uncertain world.



CHOWK



MUS003



MAR004



MAP004



MAP007



MAP009



MAP005



MAP008



MAP002



MAP006



MAP011



MAP012



MAP001



MAP003



MAP010



MAR008



MAR007



MAR003



MAR009



MAR005



MAR006



MAR002



MAR001



MAR010



SON001



SON002



MUS001



MUS002



MUS004



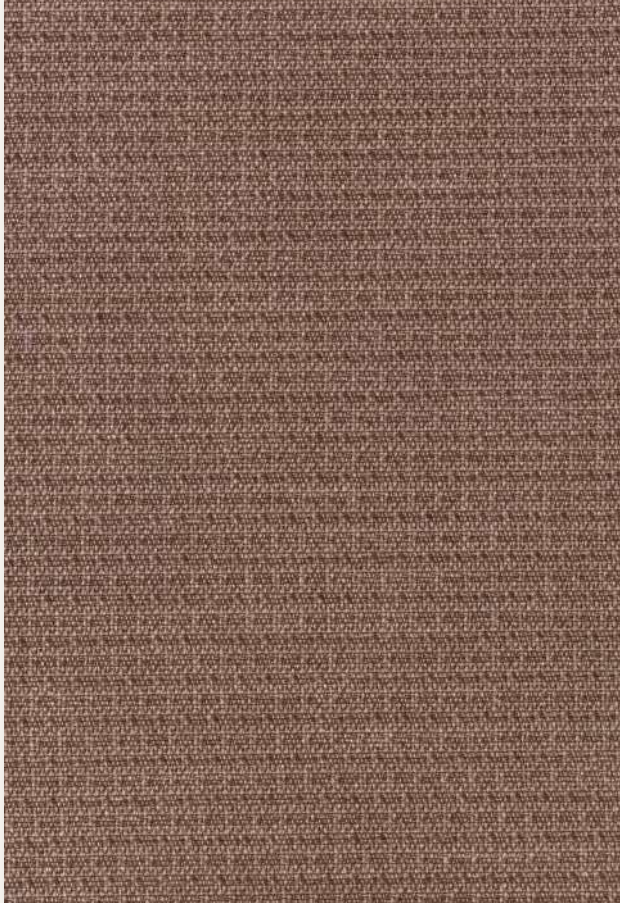


MUSSOORIE CHECKS | MUS003



GSM	MARTINDALE	COMPOSITION	V. REPEAT	H. REPEAT	HSN CODE
415	26000	100% Linen	19.5	17.6	53091910

BACK



MARGAO LINEN | MAR004



GSM	MARTINDALE	COMPOSITION	HSN CODE
670	40000	63% Linen, 37% Liscose	53092910

BACK



MAPUSA LINEN | MAP004



GSM	MARTINDALE	COMPOSITION	HSN CODE
428	15000	100% Linen	53092910





MAPUSA LINEN | MAP007



GSM	MARTINDALE	COMPOSITION	HSN CODE
428	15000	100% Linen	53092910

BACK



MAPUSA LINEN | MAP009



GSM	MARTINDALE	COMPOSITION	HSN CODE
428	15000	100% Linen	53092910

BACK



MAPUSA LINEN | MAP005



GSM	MARTINDALE	COMPOSITION	HSN CODE
428	15000	100% Linen	53092910

BACK



MAPUSA LINEN | MAP008



GSM	MARTINDALE	COMPOSITION	HSN CODE
428	15000	100% Linen	53092910





MAPUSA LINEN | MAP002



GSM 428	MARTINDALE 15000	COMPOSITION 100% Linen	HSN CODE 53092910
-------------------	----------------------------	----------------------------------	-----------------------------

BACK

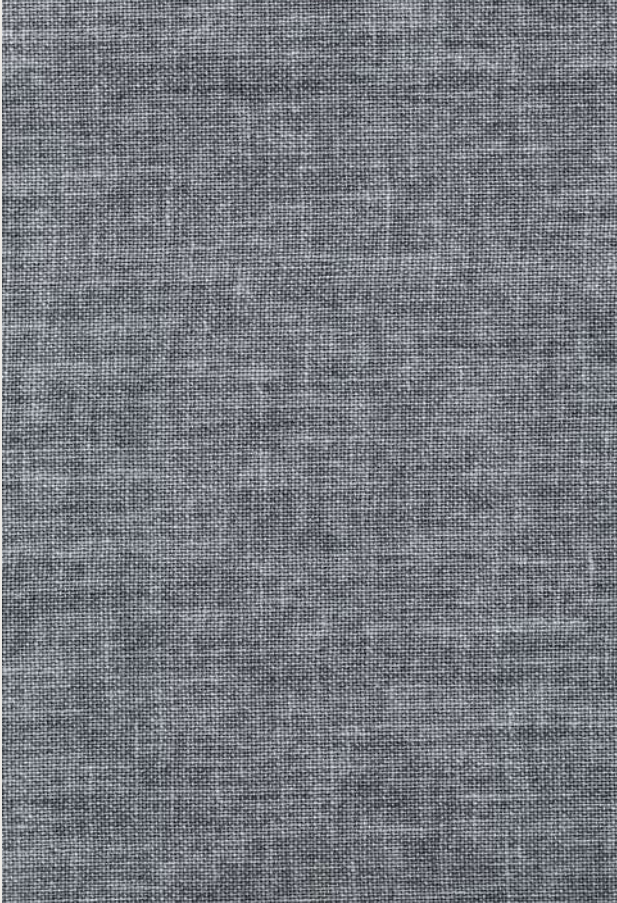


MAPUSA LINEN | MAP006



GSM 428	MARTINDALE 15000	COMPOSITION 100% Linen	HSN CODE 53092910
-------------------	----------------------------	----------------------------------	-----------------------------

BACK



MAPUSA LINEN | MAP011



GSM 428	MARTINDALE 15000	COMPOSITION 100% Linen	HSN CODE 53092910
-------------------	----------------------------	----------------------------------	-----------------------------

BACK

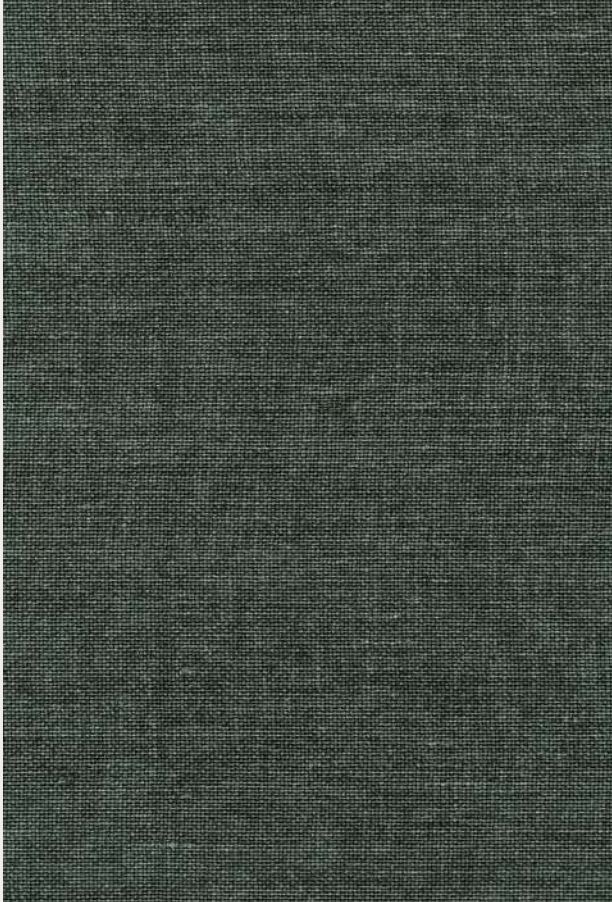


MAPUSA LINEN | MAP012



GSM 428	MARTINDALE 15000	COMPOSITION 100% Linen	HSN CODE 53092910
-------------------	----------------------------	----------------------------------	-----------------------------

BACK

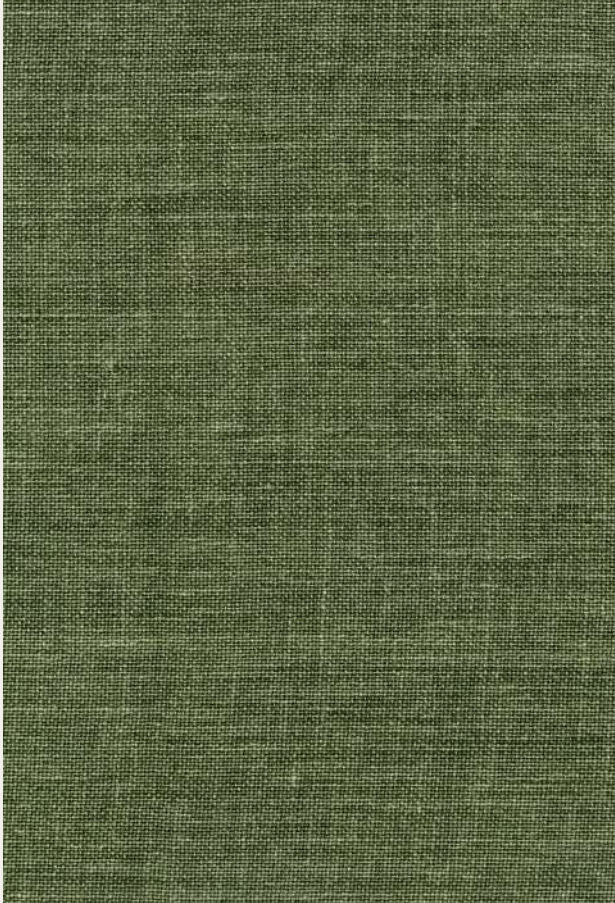


MAPUSA LINEN | MAP001



GSM 428	MARTINDALE 15000	COMPOSITION 100% Linen	HSN CODE 53092910
-------------------	----------------------------	----------------------------------	-----------------------------

BACK

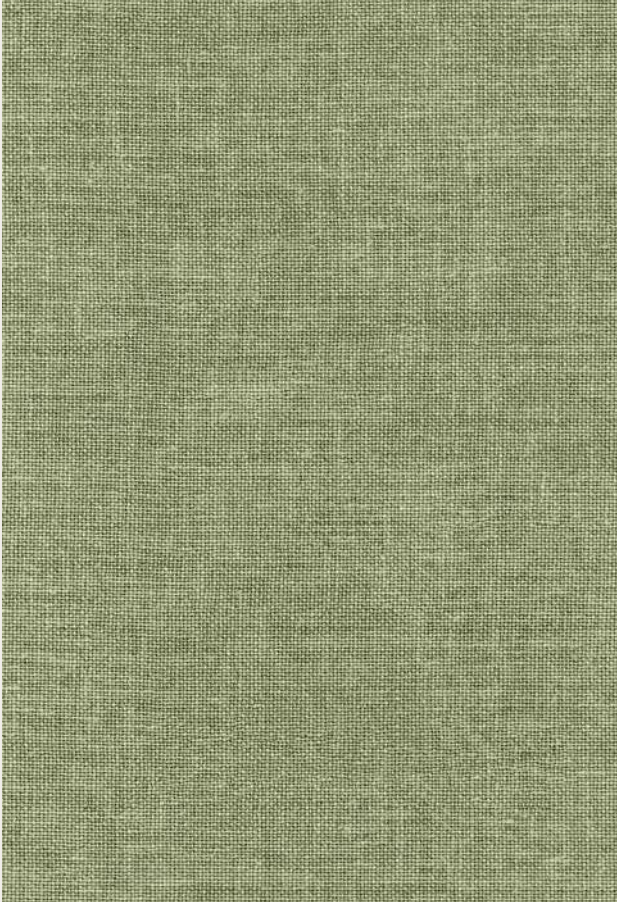


MAPUSA LINEN | MAP003



GSM 428	MARTINDALE 15000	COMPOSITION 100% Linen	HSN CODE 53092910
-------------------	----------------------------	----------------------------------	-----------------------------

BACK

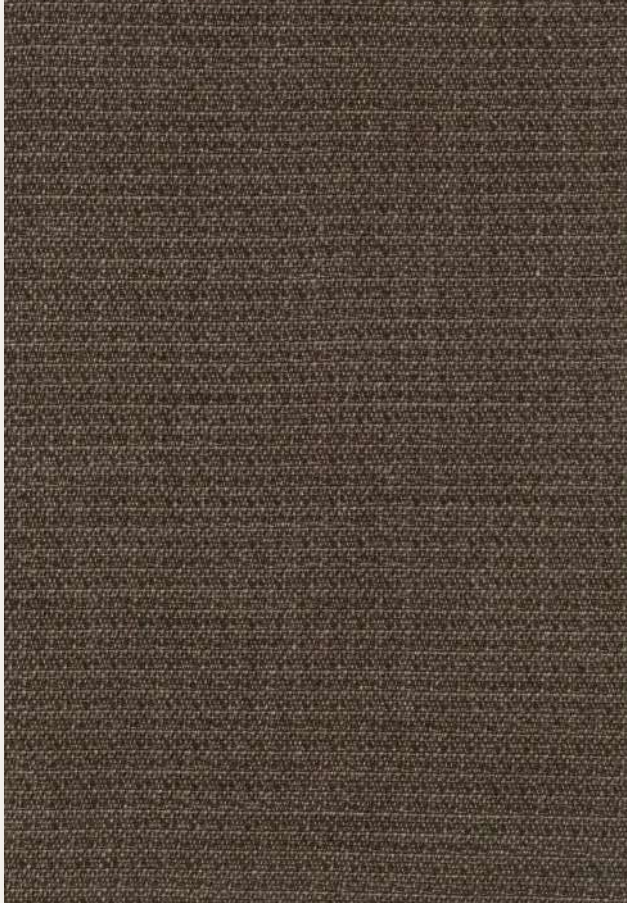


MAPUSA LINEN | MAP010



GSM 428	MARTINDALE 15000	COMPOSITION 100% Linen	HSN CODE 53092910
-------------------	----------------------------	----------------------------------	-----------------------------

BACK



MARGAO LINEN | MAR008



GSM	MARTINDALE	COMPOSITION	HSN CODE
670	40000	63% Linen, 37% Liscose	53092910

BACK

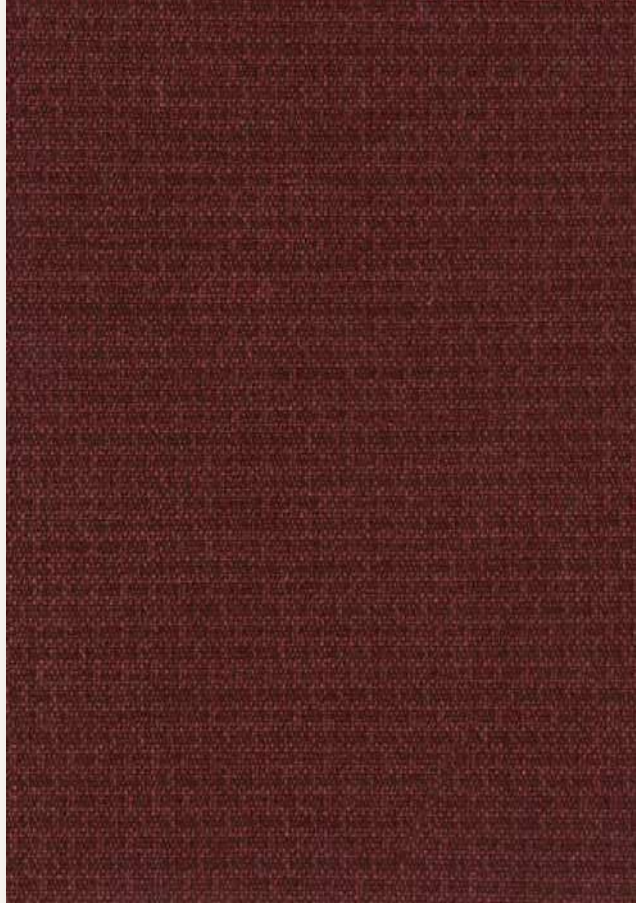


MARGAO LINEN | MAR007



GSM	MARTINDALE	COMPOSITION	HSN CODE
670	40000	63% Linen, 37% Liscose	53092910

BACK

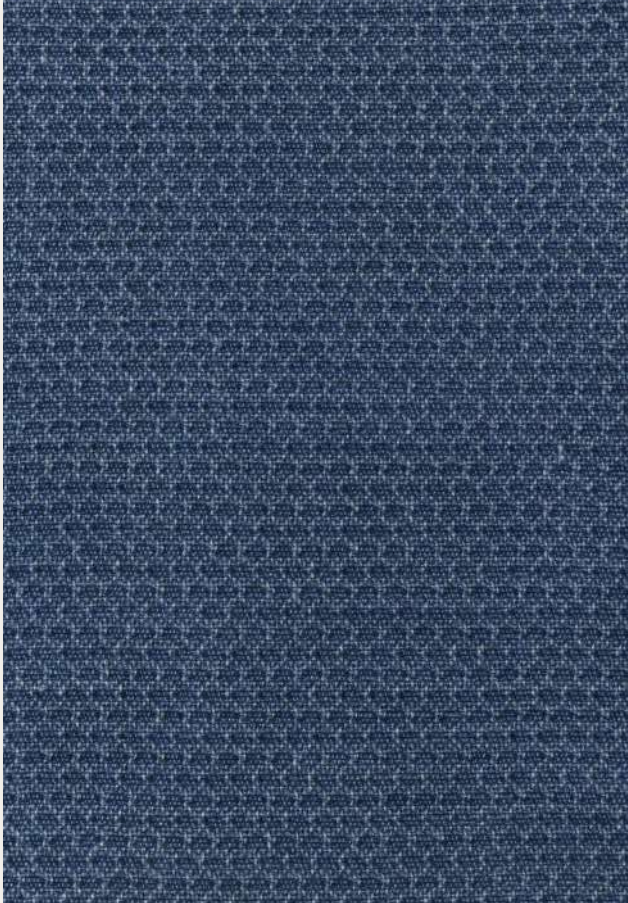


MARGAO LINEN | MAR003



GSM	MARTINDALE	COMPOSITION	HSN CODE
670	40000	63% Linen, 37% Liscose	53092910



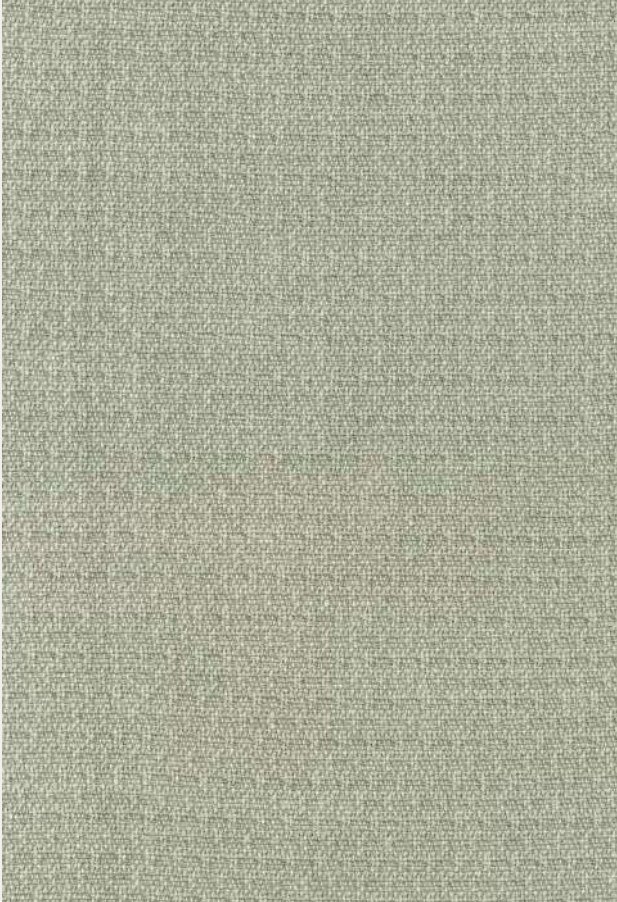


MARGAO LINEN | MAR009



GSM	MARTINDALE	COMPOSITION	HSN CODE
670	40000	63% Linen, 37% Liscose	53092910





MARGAO LINEN | MAR005



GSM	MARTINDALE	COMPOSITION	HSN CODE
670	40000	63% Linen, 37% Liscose	53092910

BACK

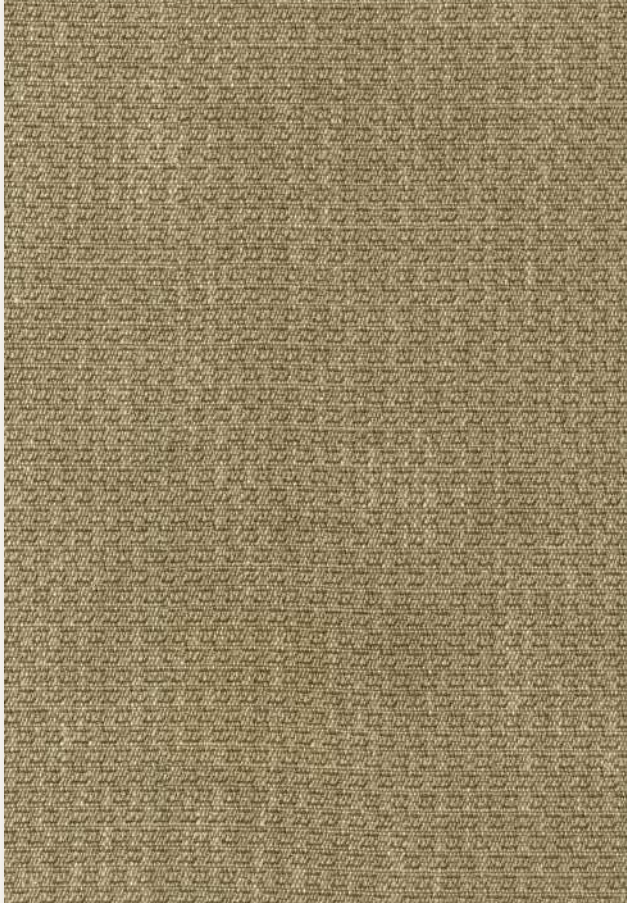


MARGAO LINEN | MAR006



GSM	MARTINDALE	COMPOSITION	HSN CODE
670	40000	63% Linen, 37% Liscose	53092910

BACK



MARGAO LINEN | MAR002



GSM	MARTINDALE	COMPOSITION	HSN CODE
670	40000	63% Linen, 37% Liscose	53092910

BACK



MARGAO LINEN | MAR001



GSM	MARTINDALE	COMPOSITION	HSN CODE
670	40000	63% Linen, 37% Liscose	53092910





MARGAO LINEN | MAR010



GSM	MARTINDALE	COMPOSITION	HSN CODE
670	40000	63% Linen, 37% Liscose	53092910

BACK

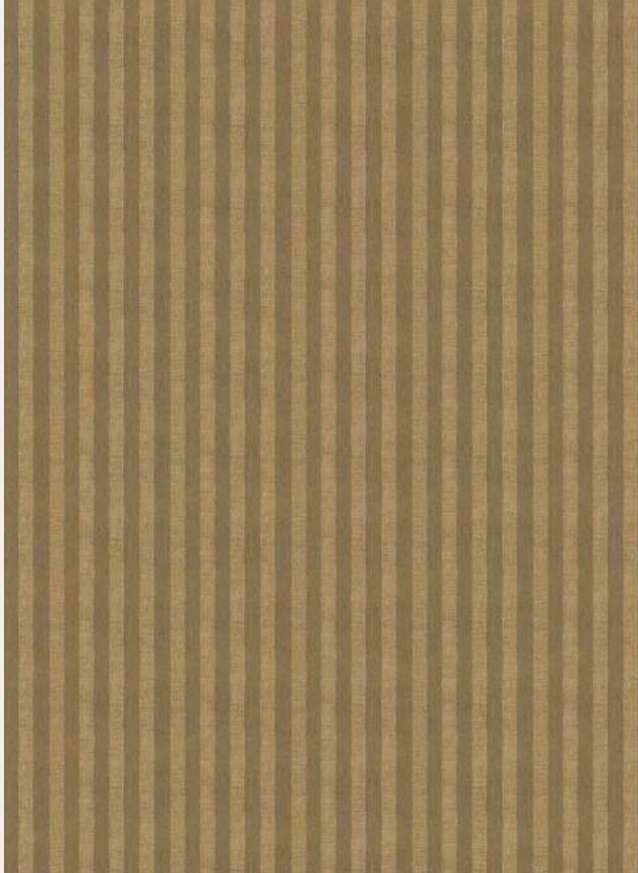


SONCHADI LINEN | SON001



GSM	MARTINDALE	COMPOSITION	V. REPEAT	H. REPEAT	HSN CODE
530	48000	45% Linen, 29% Jute, 22% Polyester, 4% Polyamide	STRIPE	3.4	55169200

BACK



SONCHADI LINEN | SON002



GSM	MARTINDALE	COMPOSITION	V. REPEAT	H. REPEAT	HSN CODE
530	48000	45% Linen, 29% Jute, 22% Polyester, 4% Polyamide	STRIPE	3.4	55169200

BACK



MUSSOORIE CHECKS | MUS001



GSM	MARTINDALE	COMPOSITION	V. REPEAT	H. REPEAT	HSN CODE
415	26000	100% Linen	19.5	17.6	53091910

BACK



MUSSOORIE CHECKS | MUS002



GSM	MARTINDALE	COMPOSITION	V. REPEAT	H. REPEAT	HSN CODE
415	26000	100% Linen	19.5	17.6	53091910

BACK



MUSSOORIE CHECKS | MUS004

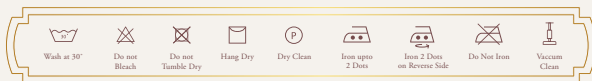


GSM	MARTINDALE	COMPOSITION	V. REPEAT	H. REPEAT	HSN CODE
415	26000	100% Linen	19.5	17.6	53091910

BACK

DESIGN	MUSOORIE CHECKS	MARGAO LINEN	MAPUSA LINEN	SONCHADI LINEN
WIDTH	145	134	142.5	141
COMPOSITION	100% Linen	63% Linen, 37% Viscose	100% Linen	45% Linen, 29% Jute, 22% Polyester, 4% Polyamide
HSN CODE	53091910	53092910	53091910	53091910
GSM	415	670	428	530
HORIZONTAL REPEAT	17.6	N/A	3.4	N/A
VERTICAL REPEAT	19.5	N/A	STRIPE	N/A
MARTINDALE	26000	40000	15000	48000
WASH CARE				
END USE				

WASH CARE



END USE



DESIGN	RRP (Without GST)	GST	RRP (With GST)
MAPUSA LINEN	3045	152	3197
MARGAO LINEN	7500	375	7875
MUSSOORIE LINEN	5200	260	5460
SONCHADI LINEN	7500	375	7875



 www.asianpaints.com/furnishing/sabyasachi

 www.instagram.com/worldofnilaya